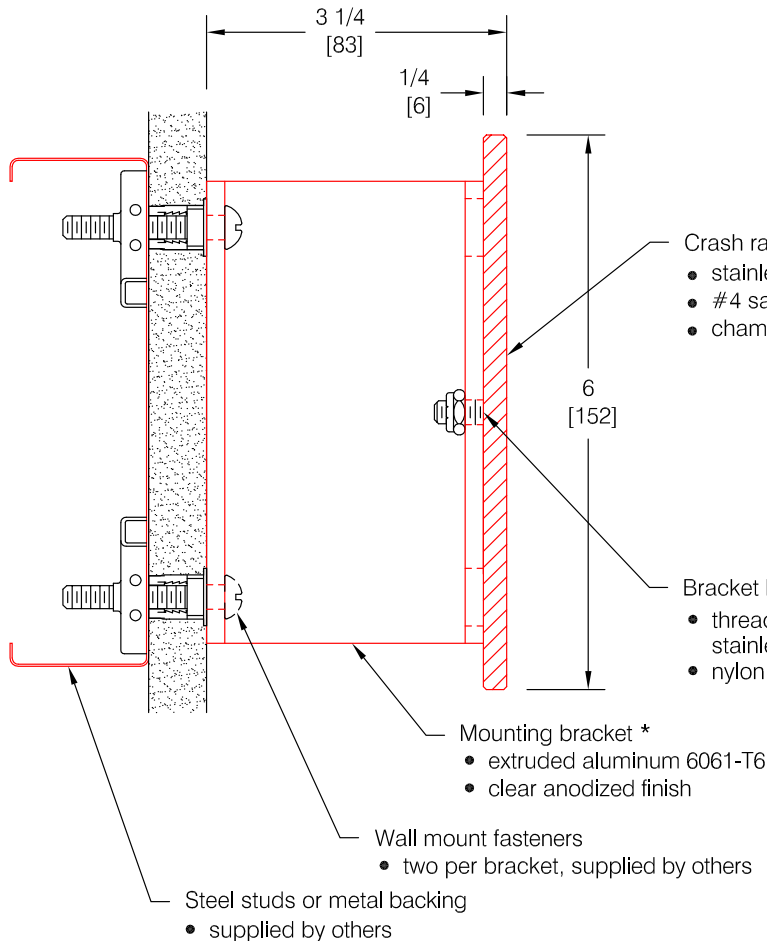


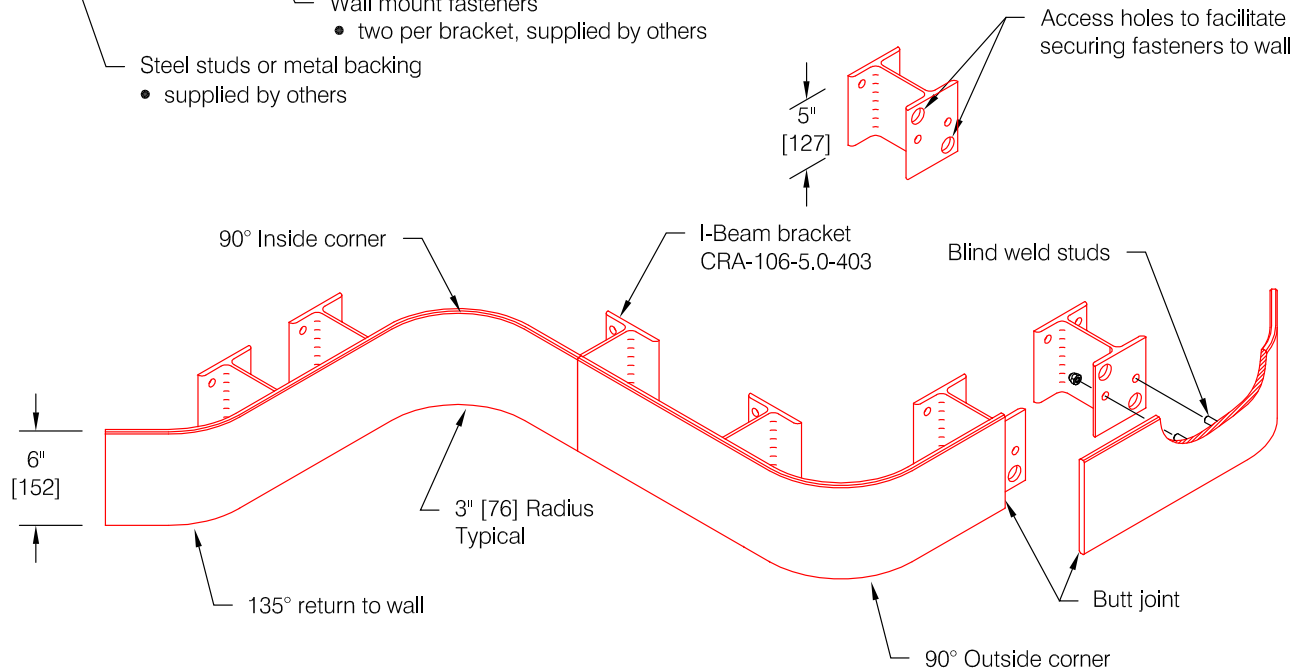
# CRS-106-IBHH Steri-Guard®

## Features:

- Prefabricated to field verified measurements
- Factory formed 3" radius wall returns and corners
- 12'-0" maximum length without butt-joints
- Corners factory formed to accommodate angles other than 90°
- Bracket standoff 3" standard (as shown) custom standoffs are available



\* Nominal bracket spacing 32" on center. Actual bracket spacing will vary according to jobsite conditions. Maximum spacing not to exceed 48" (1219).



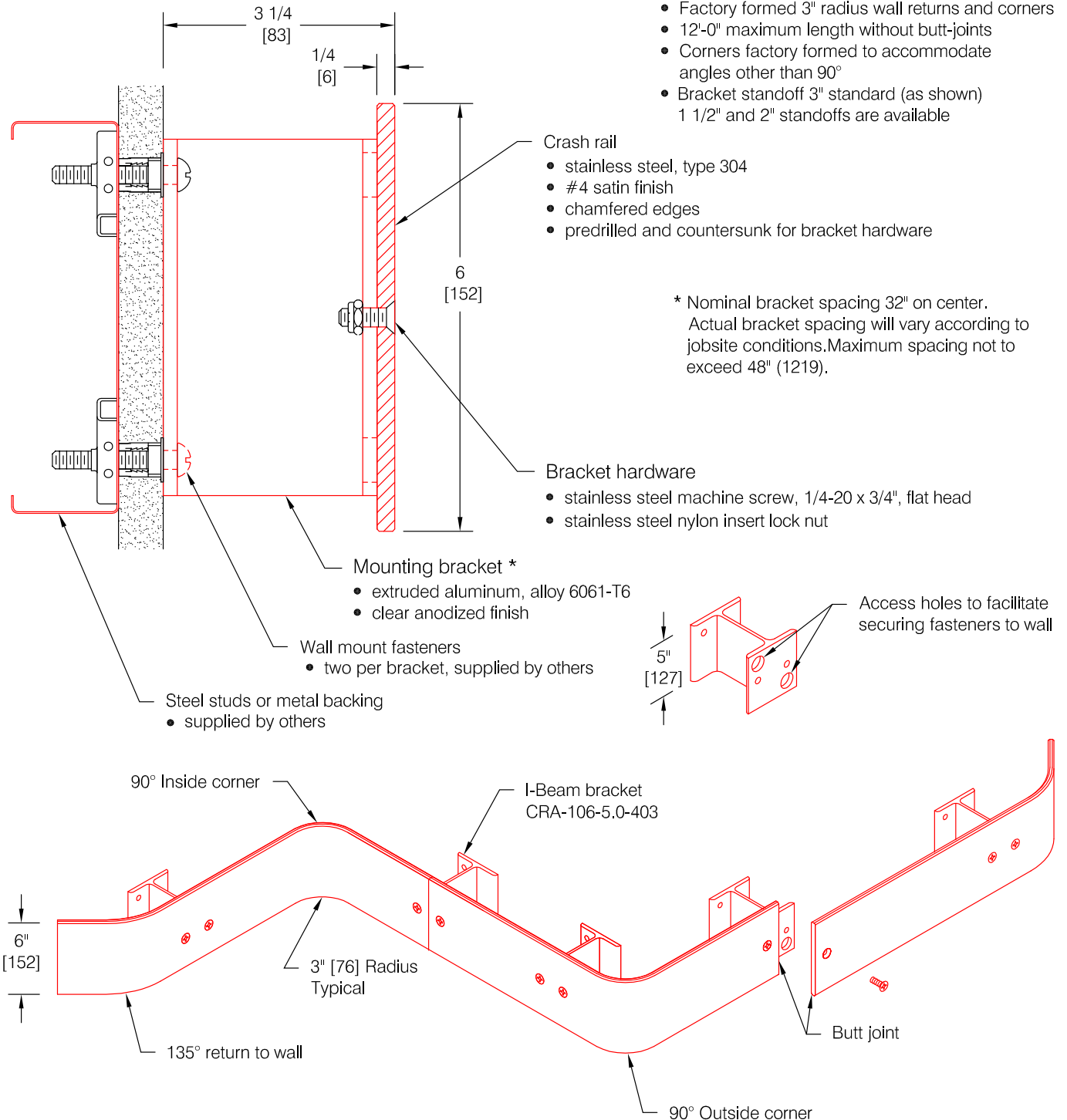
Pawling Corporation reserves the right to discontinue a design or modify an existing design without prior notice

Customer :	Project :	WD.205.3
Architect :	Sales Rep :	

# CRS-106-IBSH Steri-Guard®

## Features:

- Prefabricated to field verified measurements
- Factory formed 3" radius wall returns and corners
- 12'-0" maximum length without butt-joints
- Corners factory formed to accommodate angles other than 90°
- Bracket standoff 3" standard (as shown)  
1 1/2" and 2" standoffs are available



Pawling Corporation reserves the right to discontinue a design or modify an existing design without prior notice

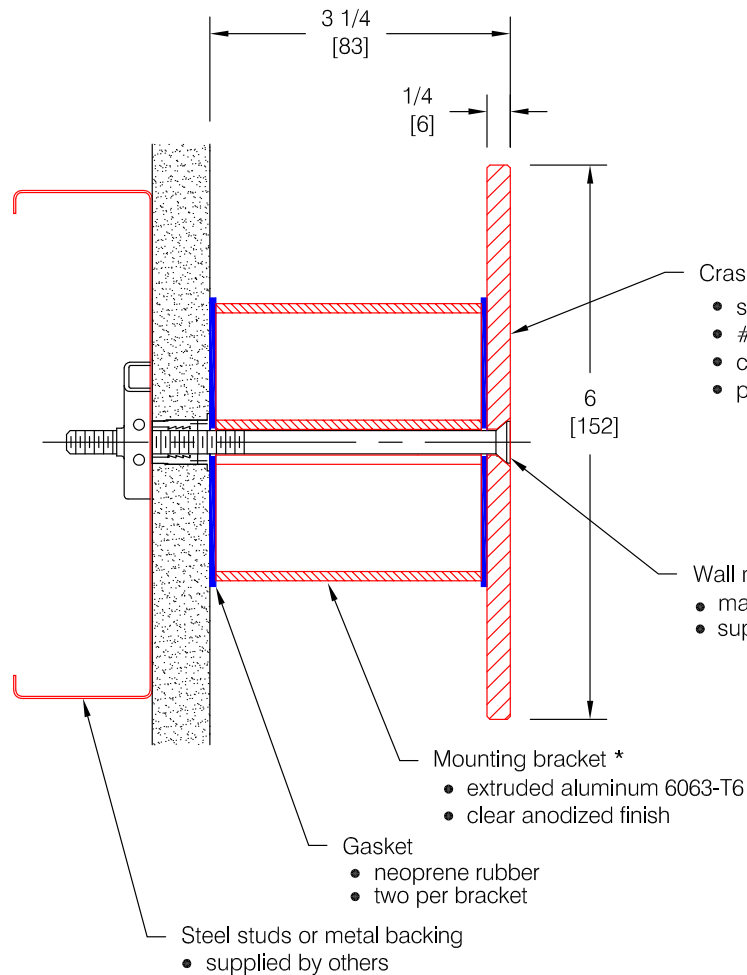
Customer :

Project :

Architect :

Sales Rep :

WD.205.0

**CRS-106-TBSH Steri-Guard®**

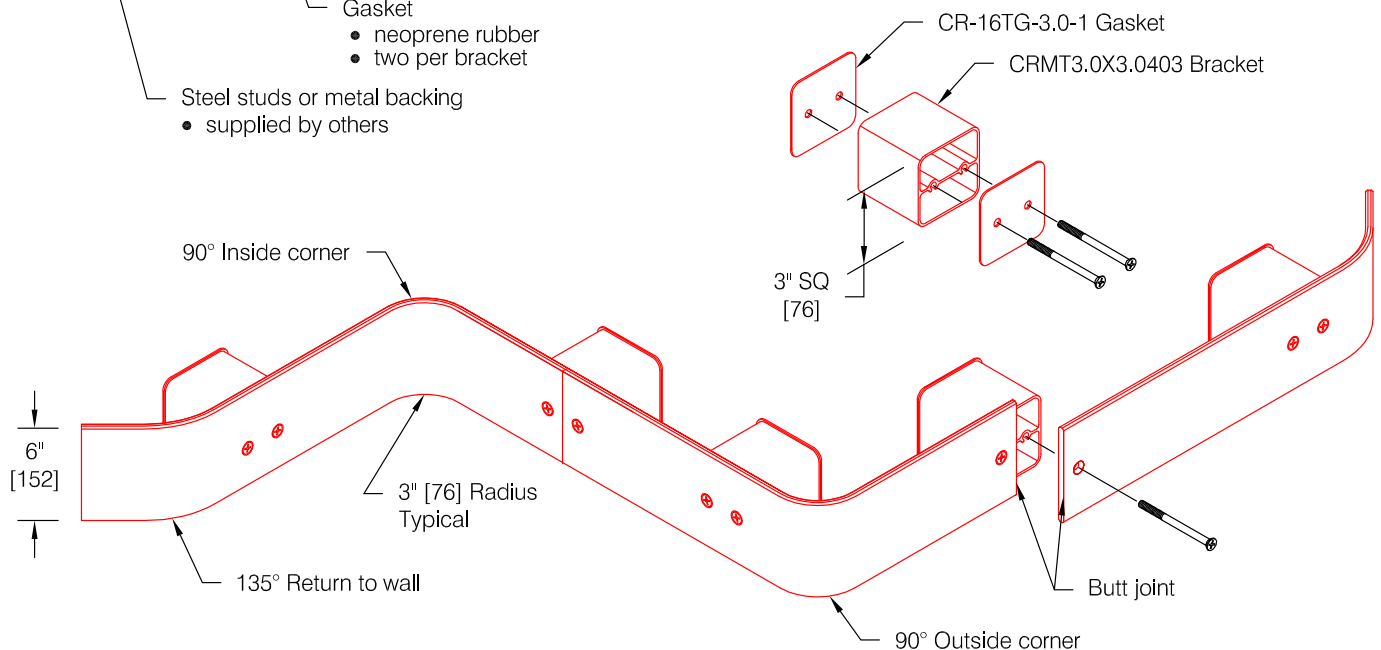
*Features:*

- Prefabricated to field verified measurements
- Factory formed 3" radius wall returns and corners
- 12'-0" maximum length without butt-joints
- Corners factory formed to accommodate angles other than 90°
- Bracket standoff 3" standard (as shown)  
custom standoffs are available

- Crash rail
- stainless steel, type 304
  - #4 satin finish
  - chamfered edges
  - predrilled and countersunk for bracket hardware

- Wall mount fasteners
- machine screw, 1/4-20 x 5", flat head, stainless steel
  - supplied by others

\* Nominal bracket spacing 32" on center.  
Actual bracket spacing will vary according to  
jobsite conditions. Maximum spacing not to  
exceed 48" (1219).



*Pawling Corporation reserves the right to discontinue a design or modify an existing design without prior notice*

*Customer :*

Project :

*Architect :*

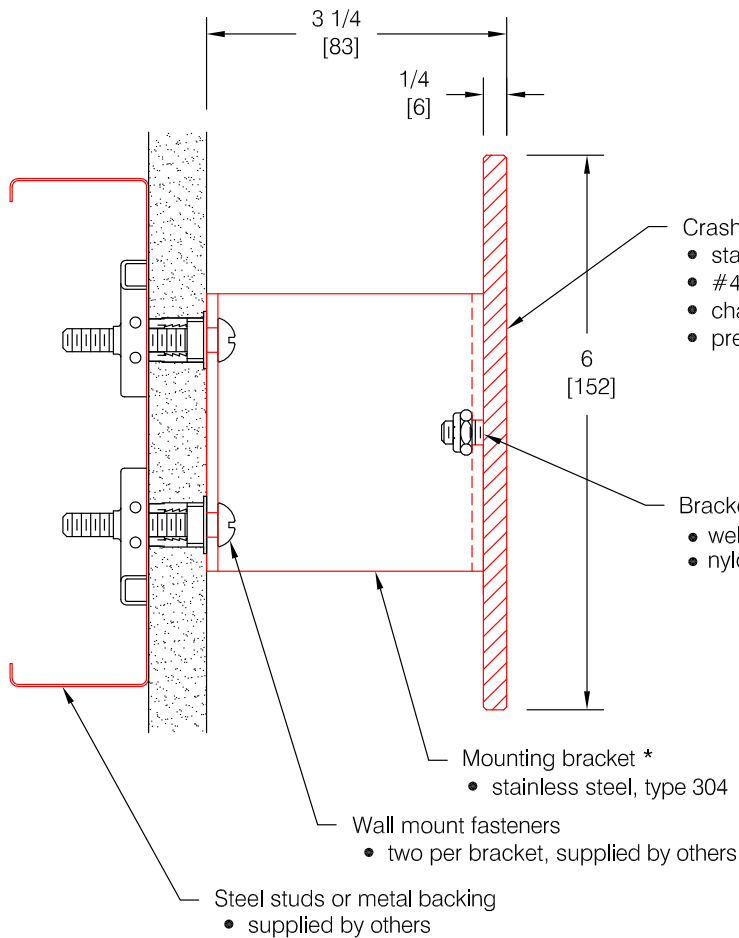
Sales Rep :

WD.205.2a

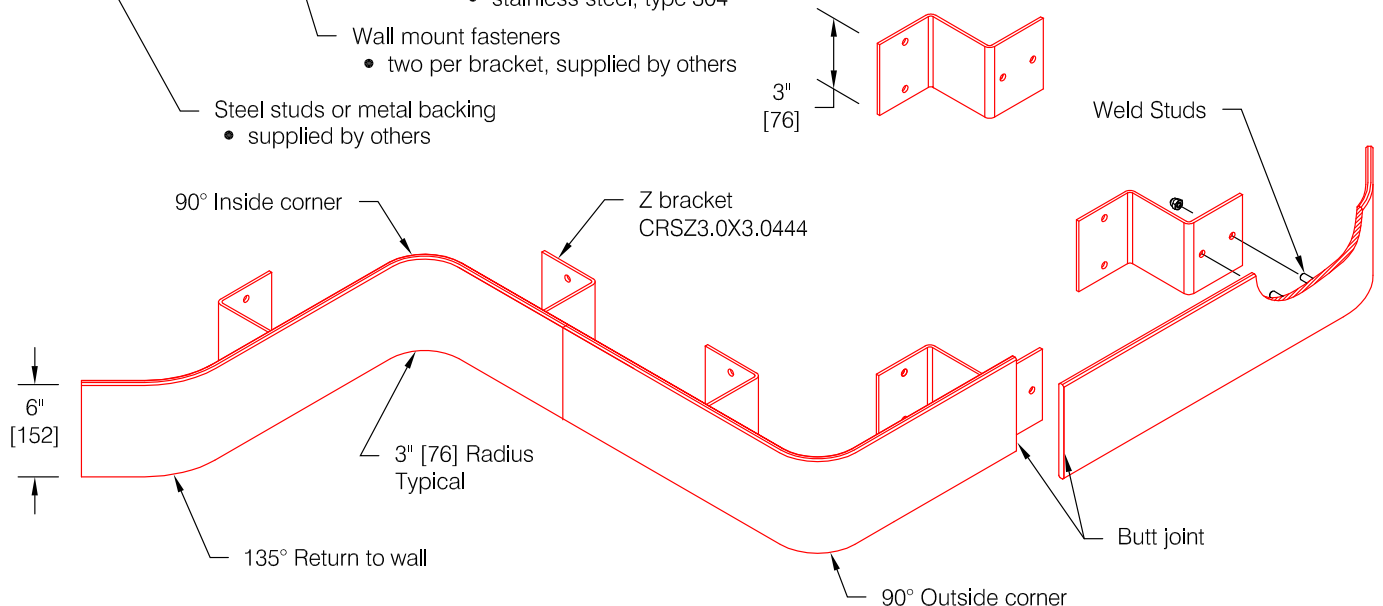
# CRS-106-ZBHH Steri-Guard®

## Features:

- Prefabricated to field verified measurements
- Factory formed 3" radius wall returns and corners
- 12'-0" maximum length without butt-joints
- Corners factory formed to accommodate angles other than 90°
- Bracket standoff 3" standard (as shown) custom standoffs are available



\* Nominal bracket spacing 32" on center.  
 Actual bracket spacing will vary according to  
 jobsite conditions. Maximum spacing not to  
 exceed 48" (1219).



Pawling Corporation reserves the right to discontinue a design or modify an existing design without prior notice

Customer :

Project :

Architect :

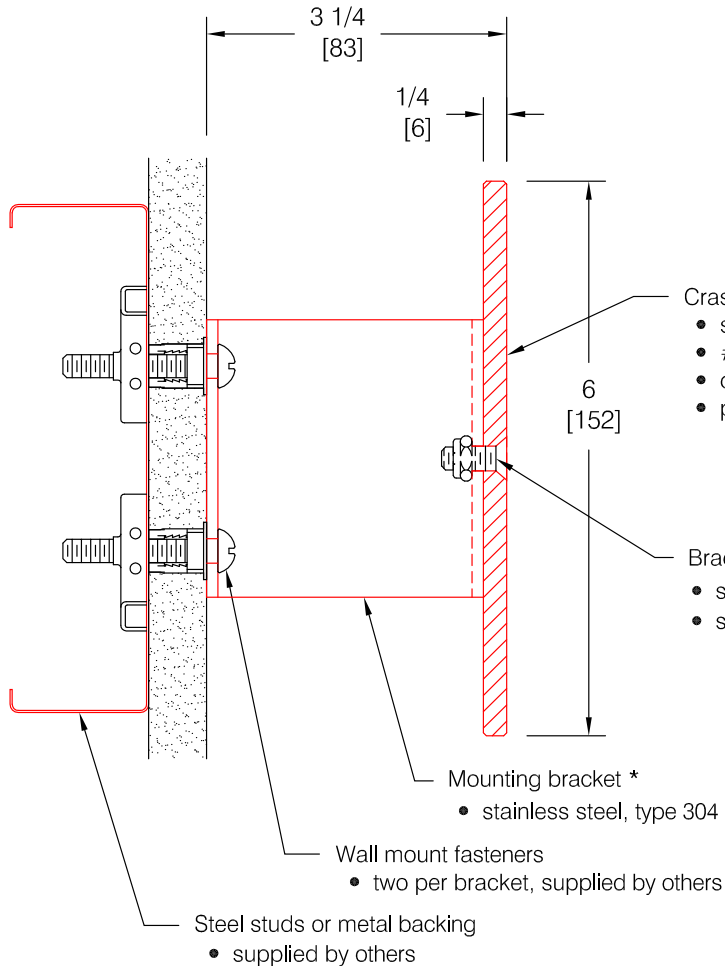
Sales Rep :

WD.205.4a

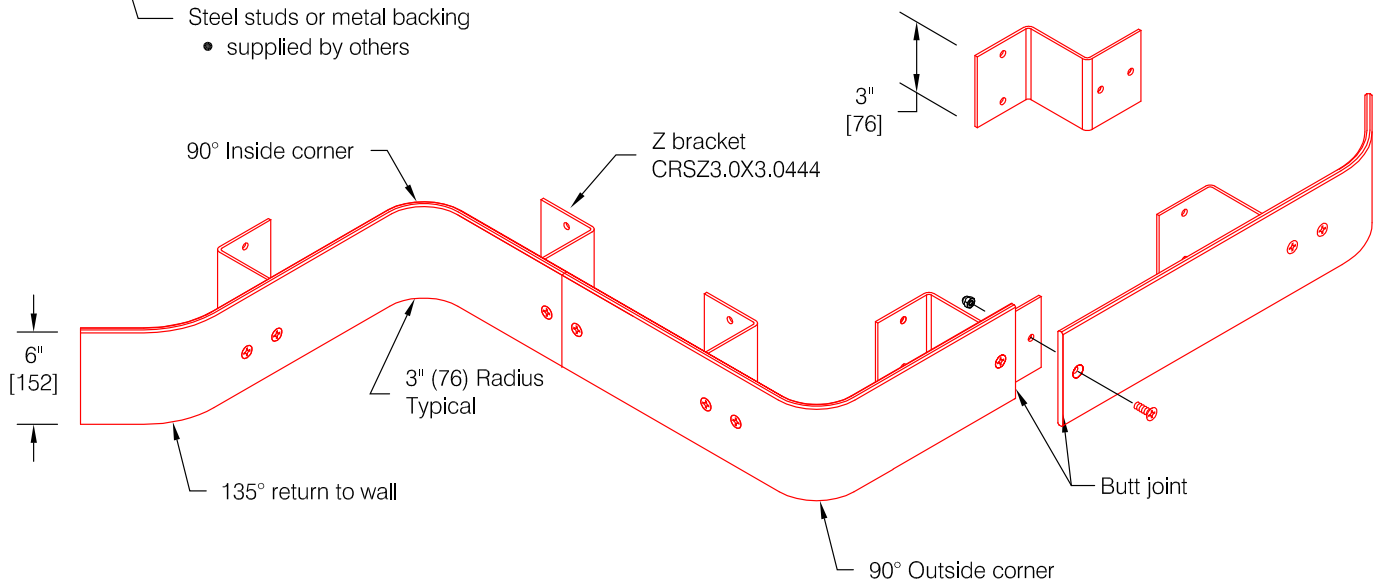
# CRS-106-ZBSH Steri-Guard®

## Features:

- Prefabricated to field verified measurements
- Factory formed 3" radius wall returns and corners
- 12'-0" maximum length without butt-joints
- Corners factory formed to accommodate angles other than 90°
- Bracket standoff 3" standard (as shown) custom standoffs are available



\* Nominal bracket spacing 32" on center.  
 Actual bracket spacing will vary according to  
 jobsite conditions. Maximum spacing not to  
 exceed 48" (1219).



Pawling Corporation reserves the right to discontinue a design or modify an existing design without prior notice

Customer :

Project :

Architect :

Sales Rep :

WD.205.1a