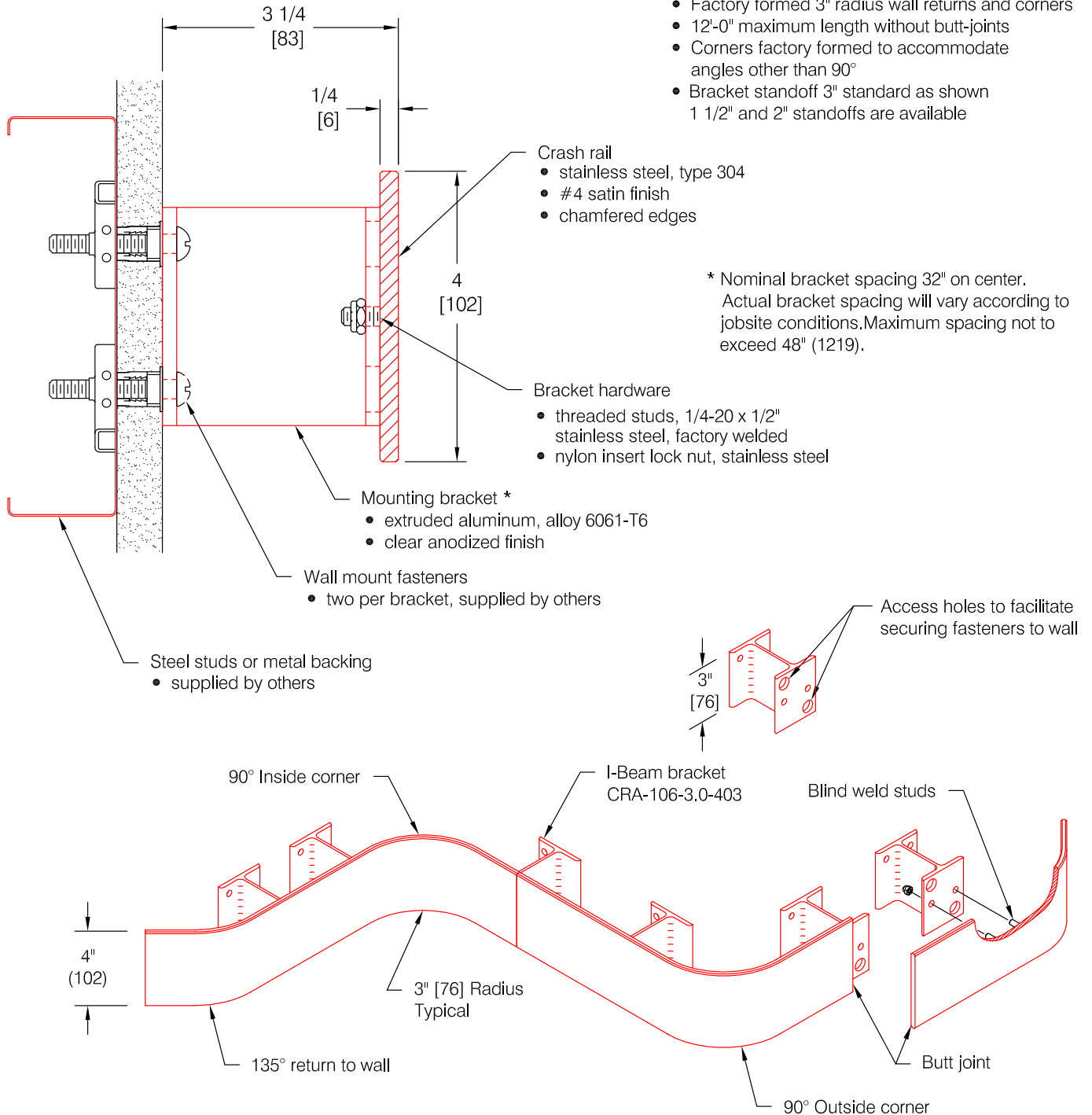


# CRS-104-IBHH Steri-Guard<sup>®</sup>

## Features:

- Prefabricated to field verified measurements
- Factory formed 3" radius wall returns and corners
- 12'-0" maximum length without butt-joints
- Corners factory formed to accommodate angles other than 90°
- Bracket standoff 3" standard as shown  
1 1/2" and 2" standoffs are available



Pawling Corporation reserves the right to discontinue a design or modify an existing design without prior notice

Customer :	Project :	WD.204.3
Architect :	Sales Rep :	

**CRS-104-IBSH Steri-Guard®**

*Features:*

- Prefabricated to field verified measurements
- Factory formed 3" radius wall returns and corners
- 12'-0" maximum length without butt-joints
- Corners factory formed to accommodate angles other than 90°
- Bracket standoff 3" standard (as shown)  
1 1/2" and 2" standoffs are available

\* Nominal bracket spacing 32" on center.  
Actual bracket spacing will vary according to  
jobsite conditions. Maximum spacing not to  
exceed 48" (1219).

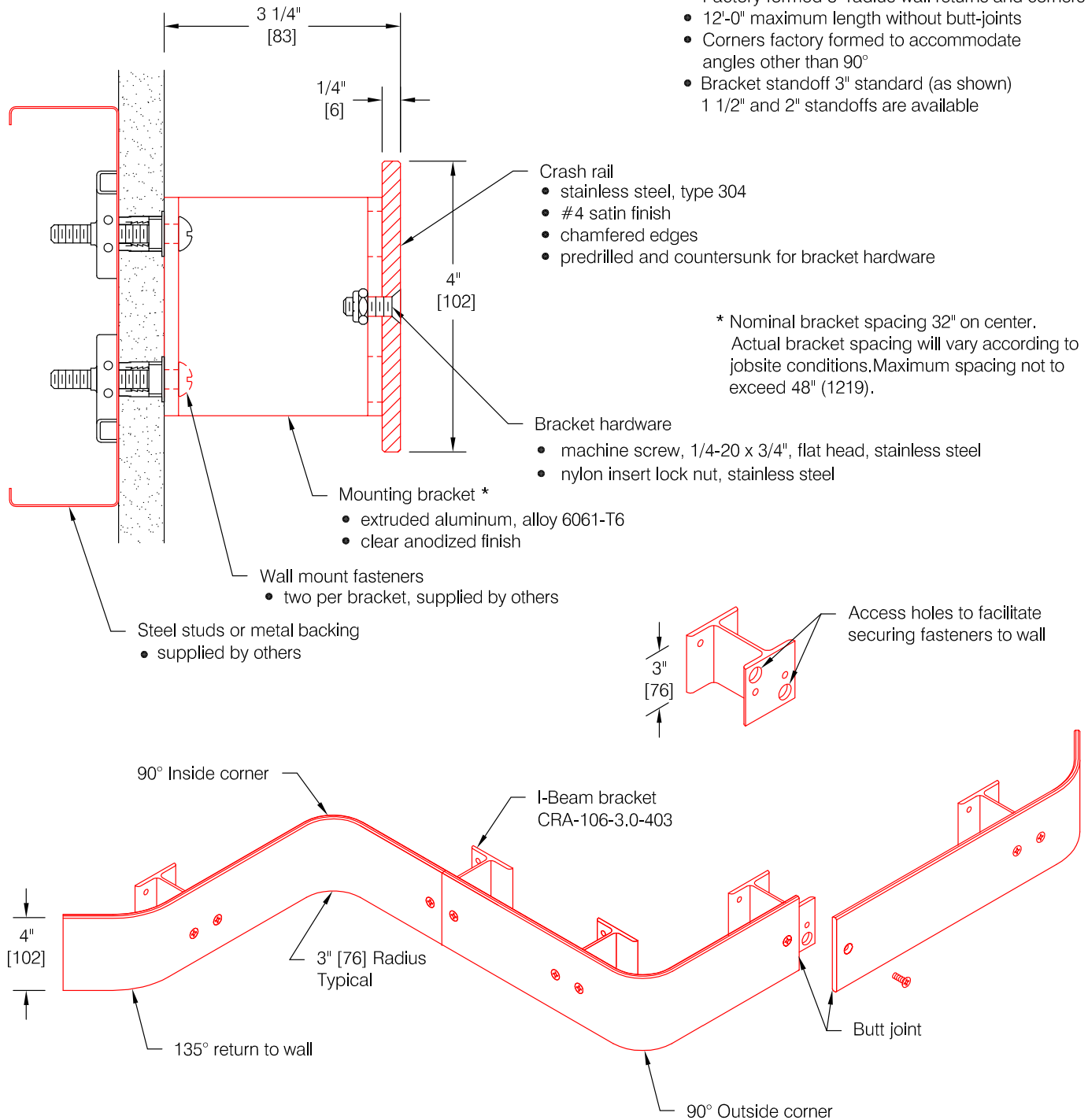
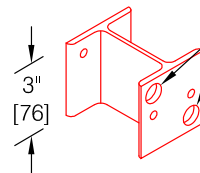
- machine screw, 1/4-20 x 3/4", flat head, stainless steel
- nylon insert lock nut, stainless steel

- Mounting bracket \*
- extruded aluminum, alloy 6061-T6
  - clear anodized finish

- Wall mount fasteners
- two per bracket, supplied by others

- Steel studs or metal backing  
● supplied by others

Access holes to facilitate  
securing fasteners to wall



*Pawling Corporation reserves the right to discontinue a design or modify an existing design without prior notice*

*Customer :*

---

*Project :*

*Architect :*

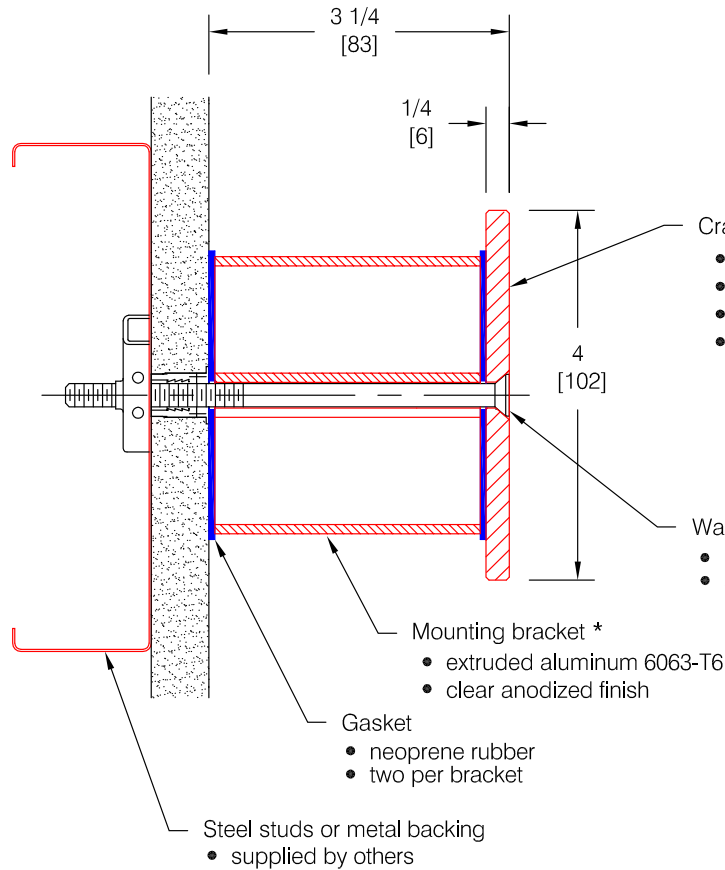
Sales Rep :

WD.204.0

# CRS-104-TBSH Steri-Guard<sup>®</sup>

## Features:

- Prefabricated to field verified measurements
- Factory formed 3" radius wall returns and corners
- 12'-0" maximum length without butt-joints
- Corners factory formed to accommodate angles other than 90°
- Bracket standoff 3" standard (as shown) custom standoffs are available



### Crash rail

- stainless steel, type 304
- #4 satin finish
- chamfered edges
- predrilled and countersunk for bracket hardware

### Wall mount fasteners

- machine screw, 1/4-20 x 5", flat head, stainless steel
- supplied by others

### Mounting bracket \*

- extruded aluminum 6063-T6
- clear anodized finish

### Gasket

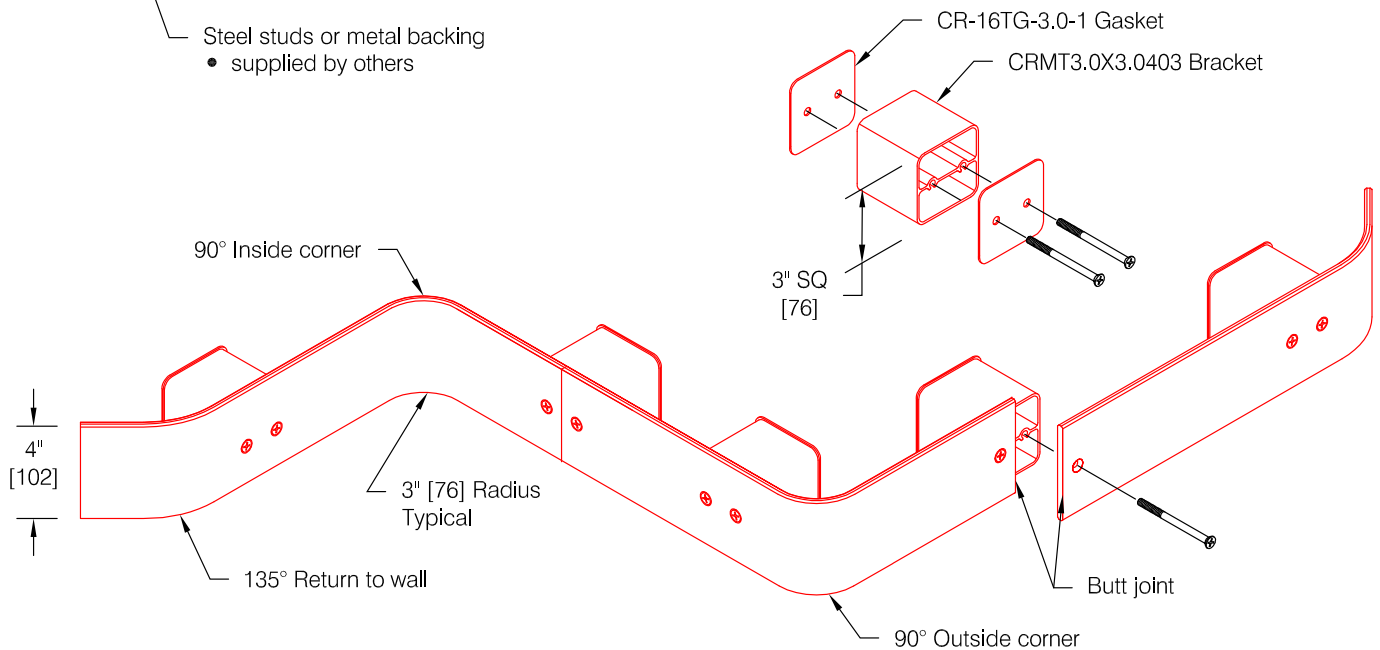
- neoprene rubber
- two per bracket

### Steel studs or metal backing

- supplied by others

\* Nominal bracket spacing 32" on center.

Actual bracket spacing will vary according to jobsite conditions. Maximum spacing not to exceed 48" (1219).



Pawling Corporation reserves the right to discontinue a design or modify an existing design without prior notice

Customer :

Project :

Architect :

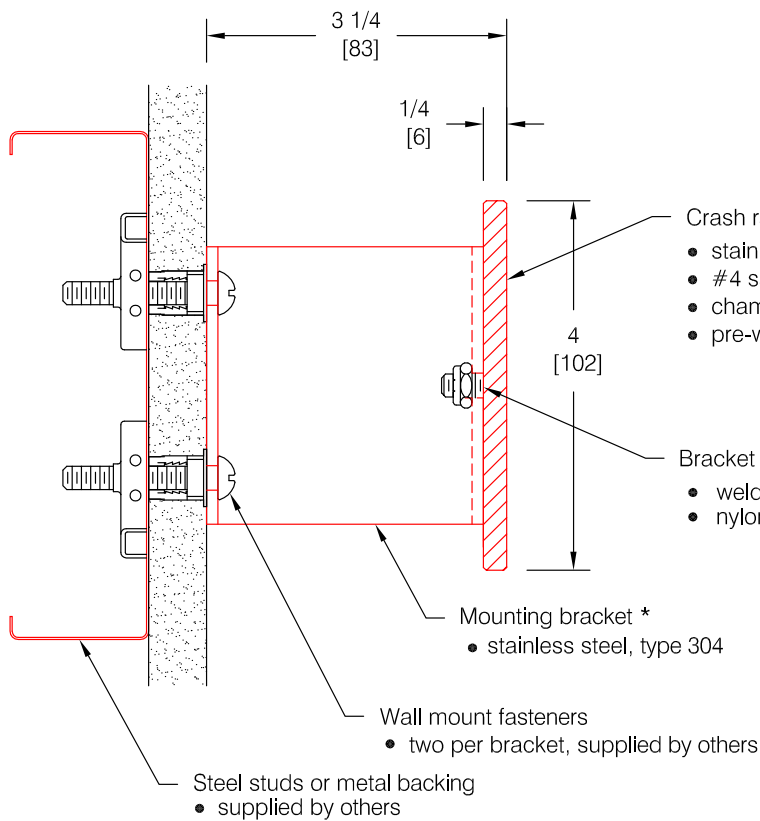
Sales Rep :

WD.204.2a

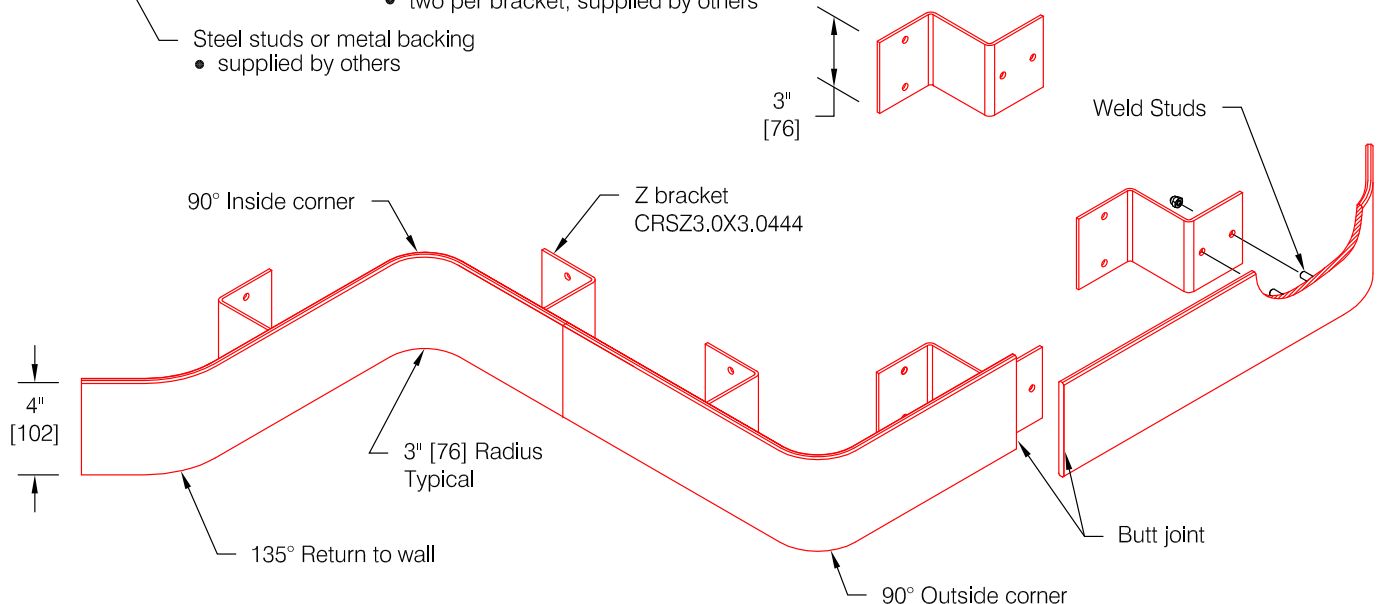
# CRS-104-ZBHH Steri-Guard®

## Features:

- Prefabricated to field verified measurements
- Factory formed 3" radius wall returns and corners
- 12'-0" maximum length without butt-joints
- Corners factory formed to accommodate angles other than 90°
- Bracket standoff 3" standard (as shown) custom standoffs are available



\* Nominal bracket spacing 32" on center.  
 Actual bracket spacing will vary according to jobsite conditions. Maximum spacing not to exceed 48" (1219).



Pawling Corporation reserves the right to discontinue a design or modify an existing design without prior notice

Customer :

Project :

Architect :

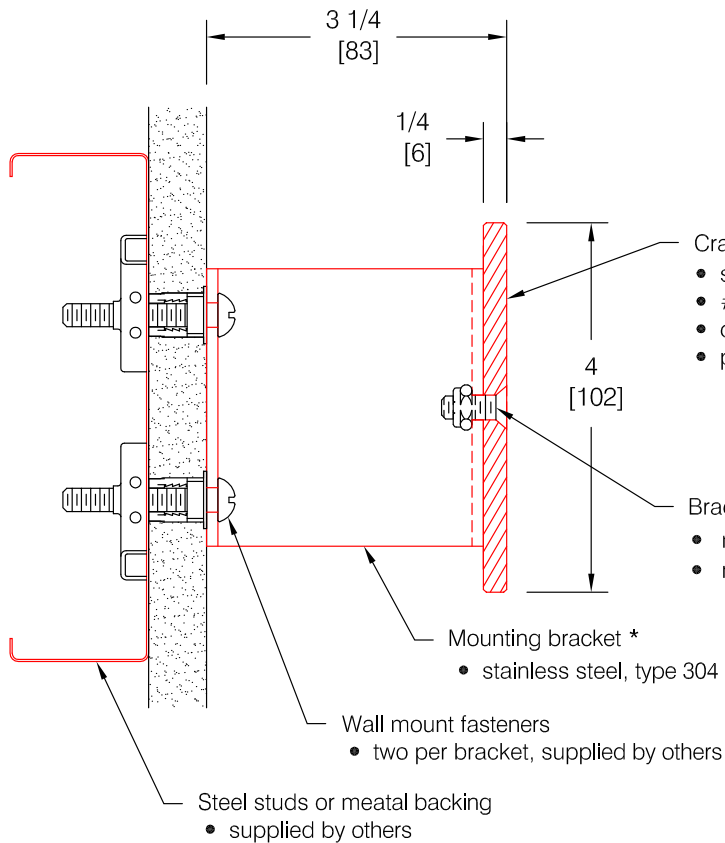
Sales Rep :

WD.204.4a

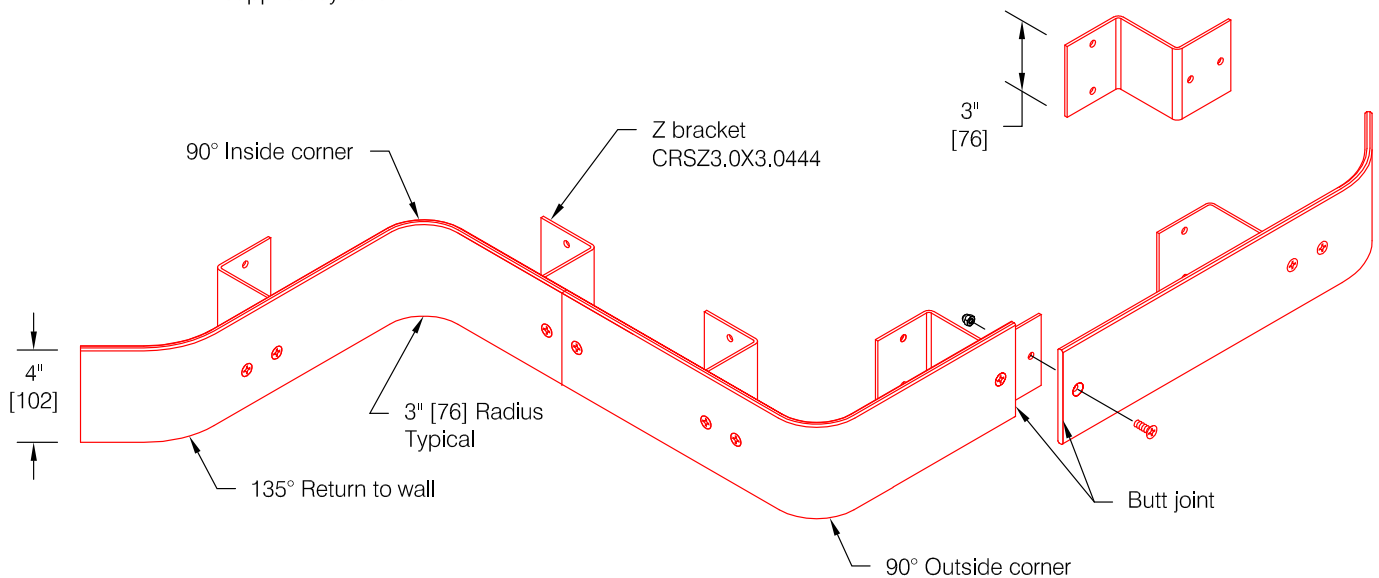
# CRS-104-ZBSH Steri-Guard<sup>®</sup>

## Features:

- Prefabricated to field verified measurements
- Factory formed 3" radius wall returns and corners
- 12'-0" maximum length without butt-joints
- Corners factory formed to accommodate angles other than 90°
- Bracket standoff 3" standard (as shown) custom standoffs are available



\* Nominal bracket spacing 32" on center. Actual bracket spacing will vary according to jobsite conditions. Maximum spacing not to exceed 48" (1219).



Pawling Corporation reserves the right to discontinue a design or modify an existing design without prior notice

Customer :

Project :

Architect :

Sales Rep :

WD.204.1a